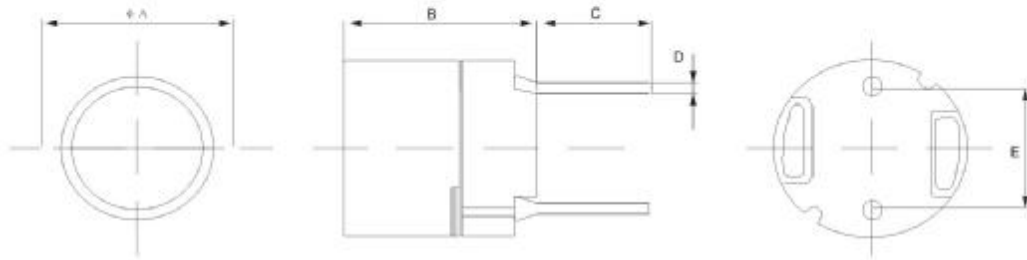


Dimensions and Land Patterns. (UNIT: mm)



TYPE	φ A(max.)	B(max.)	C	D	E
LCR664	6.50	6.50	2.50	0.50	4.00
LCR875	8.30	7.50	2.50	0.70	5.00

PIN POWER INDUCTORS

TYPE:LCR664, LCR875

Parts No.	L (H)	LCR664		LCR875	
		D.C.R(Ω) : MAX.	Rated Current (A)	D.C.R(Ω) : MAX.	Rated Current (A)
1R2	1.2u	42m	2.40	18m	4.10
1R8	1.8u	45m	2.25	23m	3.75
2R2	2.2u	47m	2.10	25m	3.45
2R7	2.7u	50m	2.00	26m	3.35
3R0	3.0u	56m	1.90	28m	3.25
3R3	3.3u	62m	1.80	30m	3.19
3R9	3.9u	66m	1.62	31m	3.08
4R7	4.7u	71m	1.47	35m	2.92
5R6	5.6u	81m	1.33	39m	2.80
6R8	6.8u	92m	1.18	43m	2.65
8R2	8.2u	105m	1.12	47m	2.55
100	10u	118m	1.00	50m	2.40
120	12u	130m	960m	55m	2.25
150	15u	180m	870m	62m	1.95
180	18u	210m	780m	72m	1.78
220	22u	260m	720m	80m	1.60
270	27u	290m	660m	100m	1.40
330	33u	330m	600m	140m	1.30
390	39u	360m	550m	150m	1.20
470	47u	390m	500m	170m	1.10
560	56u	540m	450m	190m	990m
680	68u	620m	410m	210m	890m
820	82u	720m	370m	270m	810m
101	100u	880m	340m	320m	740m
121	120u	990m	300m	360m	670m
151	150u	1.52	270m	510m	600m
181	180u	1.70	250m	570m	550m
221	220u	1.85	230m	760m	500m
271	270u	2.85	210m	860m	450m

※ 测试条件: L≤8.2uH 测试频率100KHz / 0.25V, (N±30%);  
 L>8.2uH 测试频率1KHz / 0.25V, (M±20%);  
 ※ 测试仪表: HP4291B、502BC、CH1062.