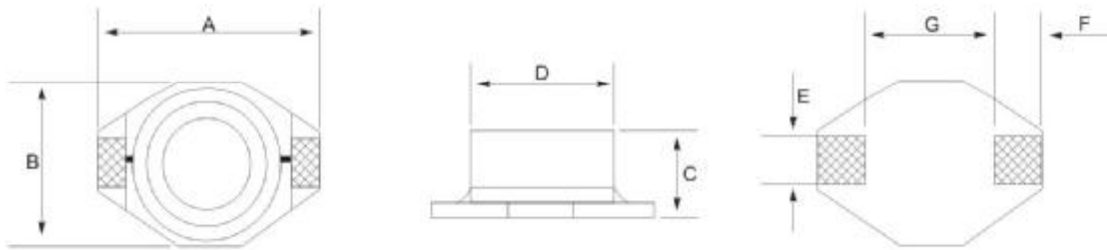


BF Series

Dimensions and Land Patterns. (UNIT: mm)



TYPE	A(max)	B(max)	C(max)	D	E	F	G
BF1608	6.9	4.5	2.9	4.00	1.20	1.15	4.20
BF3316	13.5	10.0	5.1	8.38	2.54	2.54	7.62
BF5022	19.0	15.2	7.0	12.70	2.54	2.54	12.70

SMD POWER INDUCTORS

TYPE: BF1608, BF3316, BF5022

Parts No.	L(H)	BF1608		BF3316		BF5022	
		D.C.R(Ω): MAX.	Rated Current (A)	D.C.R(Ω): MAX.	Rated Current (A)	D.C.R(Ω): MAX.	Rated Current (A)
1R0	1.0u	16m	1.50	18m	4.10	16m	6.50
1R5	1.5u	18m	1.18	23m	3.80	20m	6.00
2R2	2.2u	23m	1.08	26m	3.10	23m	5.00
3R3	3.3u	29m	800m	35m	2.50	26m	4.70
4R7	4.7u	46m	600m	44m	2.10	28m	4.40
5R6	5.6u	52m	580m	49m	2.06	30m	4.10
6R8	6.8u	60m	560m	57m	2.00	36m	4.00
100	10u	80m	400m	99m	1.60	40m	3.90
150	15u	102m	330m	134m	1.35	48m	3.40
220	22u	128m	300m	228m	1.10	59m	3.10
330	33u	169m	270m	325m	810m	75m	2.80
470	47u	228m	220m	403m	730m	97m	2.40
680	68u	332m	170m	585m	640m	138m	2.00
101	100u	520m	140m	793m	520m	207m	1.70
151	150u	800m	110m	1.80	430m	293m	1.30
221	220u	1.08	90m	2.15	340m	470m	1.10
331	330u	1.56	67m	2.67	270m	780m	860m
471	470u	2.20	54m	3.90	190m	1.08	730m
681	680u	3.15	43m	5.85	170m	1.40	640m
102	1000u	4.68	33m	8.32	140m	2.00	530m

※ 测试条件: $L \leq 8.2\mu\text{H}$ 测试频率100KHz / 0.25V, ($N \pm 30\%$);

$L > 8.2\mu\text{H}$ 测试频率1KHz / 0.25V, ($M \pm 20\%$);

※ 测试仪表: HP4291B、502BC、CH1062。