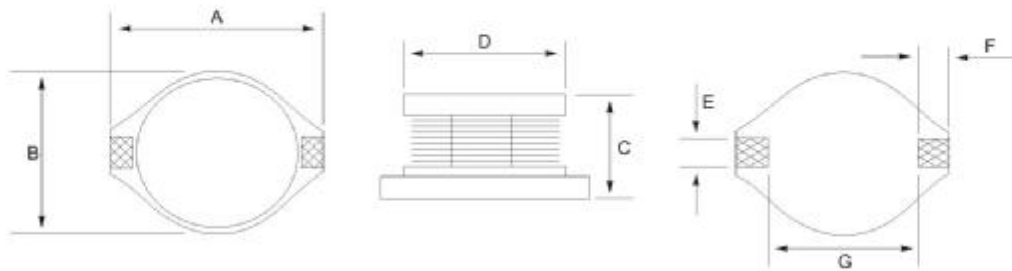


## B Series

### Dimensions and Land Patterns. (UNIT: mm)



Applications:  
Notebook, Desktop, Modem  
equipment, LCD, OA  
equipment, other electronic  
equipment

TYPE	A(max)	B(max)	C(max)	D	E	F	G
B1608	6.9	4.5	2.9	4.00	1.20	1.15	4.20
B3316	13.5	10.0	5.2	8.40	2.54	2.54	7.62
B3340	14.5	10.0	11.4	8.40	2.54	2.54	7.62
B5022	19.0	14.3	6.8	12.70	2.54	2.54	12.70

## SMD POWER INDUCTORS

TYPE: B1608, B3316, B3340, B5022

Parts No.	L (H)	B1608		B3316		B3340		B5022	
		D.C.R(Ω): MAX.	Rated Current (A)	D.C.R(Ω): MAX.	Rated Current (A)	D.C.R(Ω): MAX.	Rated Current (A)	D.C.R(Ω): MAX.	Rated Current (A)
1R0	1.0u	30m	2.88	8.0m	6.30	7.7m	9.80	6m	10.2
1R5	1.5u	34m	2.70	9m	5.70	12m	8.50	7m	8.50
2R2	2.2u	47m	2.25	12m	5.00	13m	8.00	8m	7.20
3R3	3.3u	65m	1.75	18m	4.30	14.3m	7.00	13m	6.30
3R9	3.9u	60m	1.60	20m	4.00	15.1m	6.80	15m	6.60
4R7	4.7u	86m	1.40	21m	3.78	15.6m	6.50	17m	5.80
5R6	5.6u	102m	1.35	25m	3.70	16.2m	6.20	20m	5.30
6R8	6.8u	117m	1.30	29m	3.50	17m	6.00	21m	4.90
8R2	8.2u	162m	1.20	31m	3.40	22m	5.20	22m	4.50
100	10u	189m	1.05	36m	3.06	30m	4.10	23m	4.30
150	15u	286m	810m	56m	2.80	36m	3.80	33m	3.85
220	22u	364m	700m	75m	2.25	52m	3.00	52m	3.15
270	27u	510m	615m	91m	1.98	63m	2.70	58m	2.75
330	33u	650m	530m	111m	1.80	70m	2.50	75m	2.50
390	39u	710m	490m	121m	1.71	82m	2.30	80m	2.40
470	47u	845m	450m	156m	1.62	99m	2.00	98m	2.10
560	56u	930m	400m	178m	1.50	122m	1.80	105m	2.00
680	68u	1.12	370m	208m	1.33	144m	1.70	120m	1.80
820	82u	1.46	355m	260m	1.21	166m	1.62	155m	1.70
101	100u	1.66	310m	317m	1.08	182m	1.35	218m	1.35
151	150u	2.93	220m	471m	900m	334m	1.10	317m	1.15
181	180u	3.60	200m	533m	792m	388m	1.05	350m	1.05
221	220u	3.90	180m	663m	720m	436m	1.00	433m	1.00
331	330u	6.31	160m	1.03	600m	689m	765m	644m	810m

※ 测试条件: L≤8.2uH 测试频率100KHz / 0.25V, (M±20%);

L>8.2uH 测试频率1KHz / 0.25V, (K±10%);

※ 测试仪表: HP4291B、502BC、CH1062。